

Adroit® DV51 CEILING MOUNTING PLATE

Installation Instructions



Part no: 90001455

CEILING MOUNTING PLATE

1. Install the ceiling mounting plate with M8 thread bars so that it is horizontally level.



NOTE! The end of the thread bars must be 5 mm or less below the fastening nut. Do not fasten the ceiling mounting plate too tight to the ceiling. Ensure that the sliding bars move and restore to their original position by pulling from the operating levers (A).

The top edge of the white covering strip of the ceiling mounting plate can be installed against the ceiling. Alternatively, a concealed mounting method can be used, in which case the ceiling can be 30 mm below the top of the white covering strip.

2. Ensure that the insulation washers are in place in the outlet collars below the ceiling mounting plate.
3. The door of the unit must be removed when the DV51 ventilation unit is installed onto the wall mounting plate.
4. Lift the ventilation unit close to the ceiling mounting plate and feed the cables through the hole in the ceiling mounting plate on top of the ceiling. Alternatively, the cables can be fed between the ceiling mounting plate and the ventilation unit to the rear wall, to the area shown in the figure.



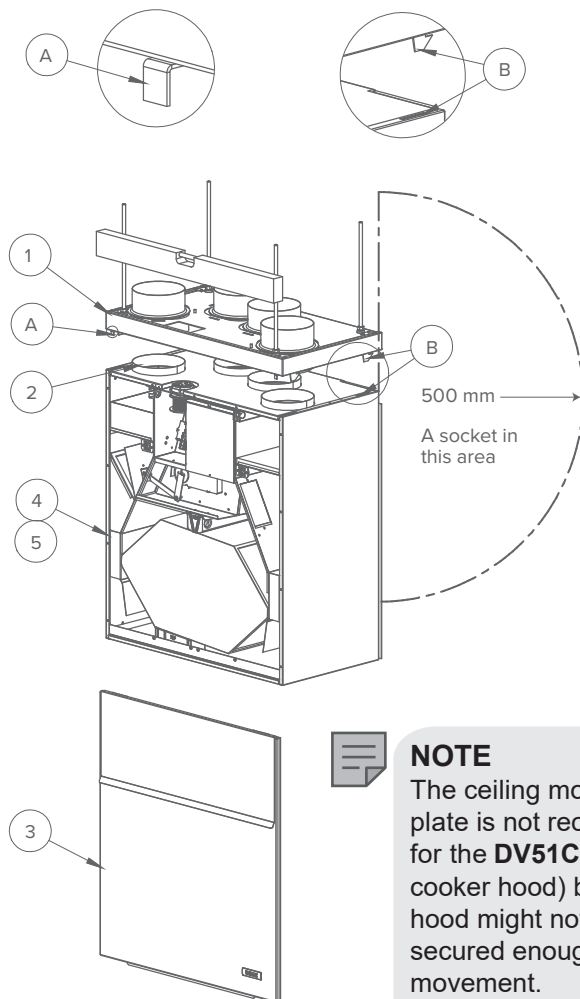
NOTE! Remember to make a service door in the ceiling so that the cables can be accessed. The distance between the service door and the ceiling mounting plate must be around 500 mm.

When the ventilation unit is lifted against the ceiling mounting plate, the unit locks in place. (Where needed, guide the mounting hooks on the ceiling mounting plate (B) to the grooves on the side panels of the ventilation unit).

There are operating levers (A) on the front bottom corners of the ceiling mounting plate. When the levers have been restored to the same level with

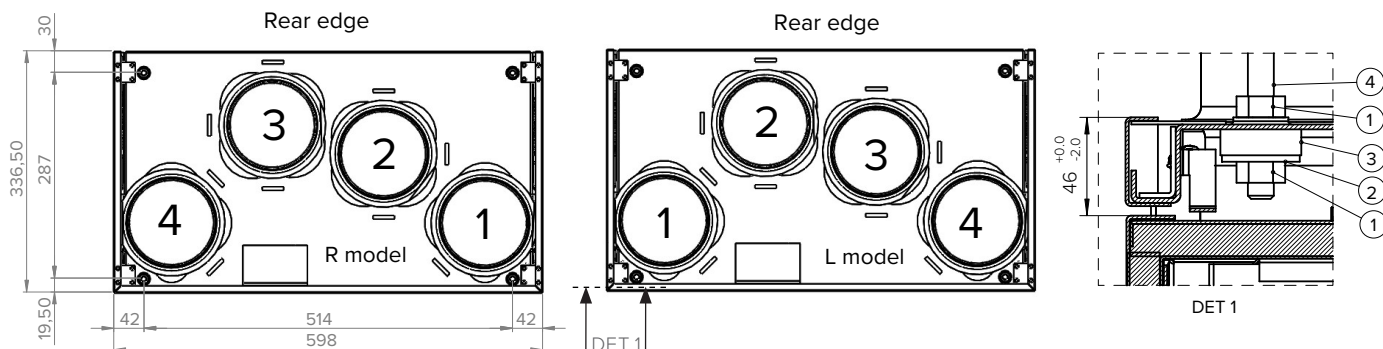
the white covering strip of the ceiling mounting plate, the unit has been locked in place.

5. Where required, the unit can be detached from the ceiling mounting plate. Remove the door of the unit. Lift the unit slightly upwards and pull simultaneously from both operating levers (A) of the ceiling mounting plate to detach the unit from the ceiling mounting plate.



NOTE
The ceiling mounting plate is not recommended for the DV51CH (with cooker hood) because the hood might not be secured enough against movement.

Dimensions and duct outlets

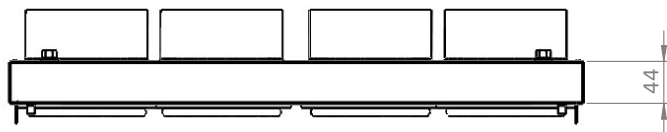


Duct outlets

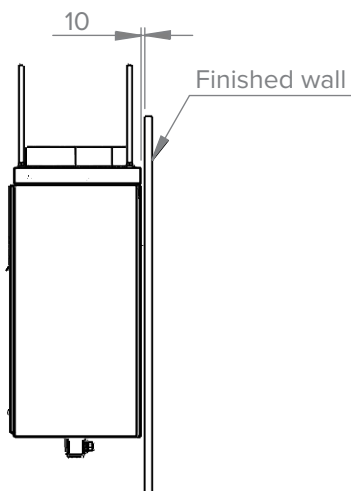
- | | |
|---|---|
| 1. Outdoor air to the unit | 3. Supply air from the unit to the apartment |
| 2. Exhaust air flowing outdoors from the unit | 4. Extract air from the apartment to the unit |

1. Nut M8
2. Washer
3. Vibration rubber damper
4. Thread bar M8

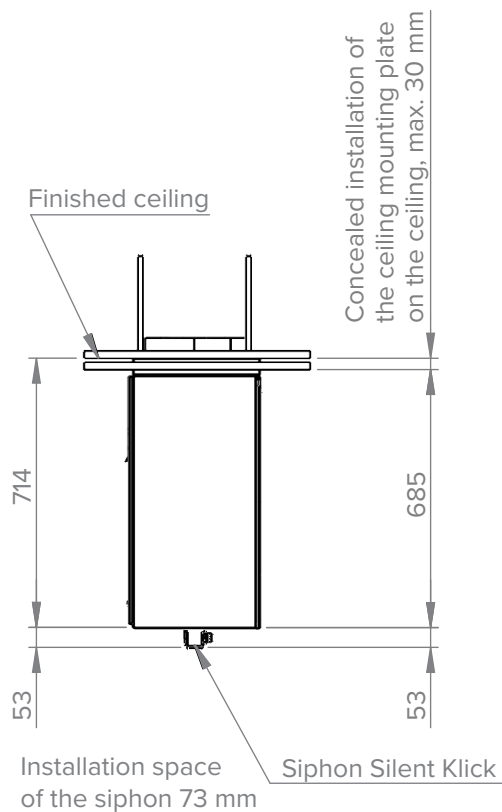
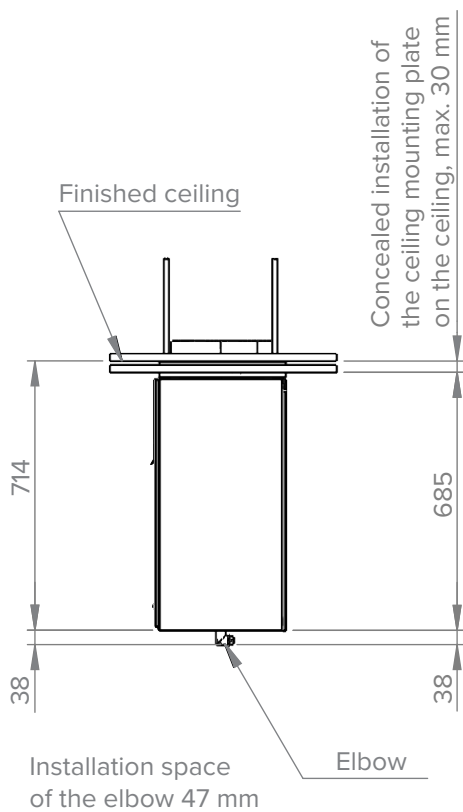
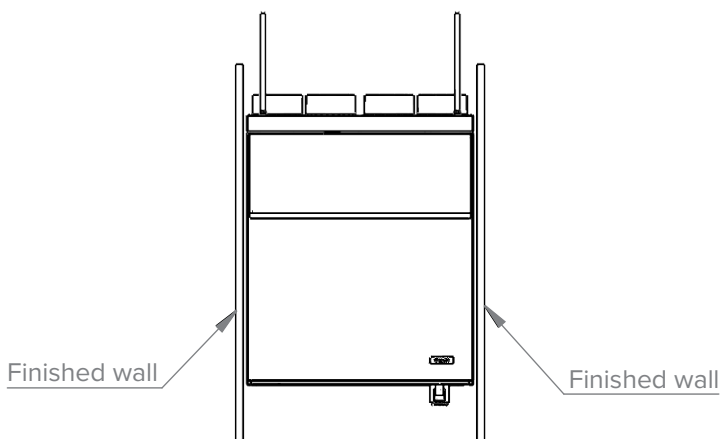
CEILING MOUNTING PLATE



The recommended distance from the finished rear wall is 10 mm



The recommended distance from the finished side wall is 10 mm



Call: 01494 525252

Visit: airflow.com

80001536 Issue 1 01/24



Airflow Developments Limited
Aidelle House, Lancaster Road,
Cressex Business Park,
High Wycombe, Buckinghamshire,
United Kingdom, HP12 3QP

E-mail: info@airflow.com
Telephone: +44 (0) 1494 525252

airflow.com

© Airflow Developments Limited. Airflow Developments Limited reserve the right, in the interests of continuous development, to alter specifications without prior notice. All orders are accepted subject to our conditions of sale which are available on request

